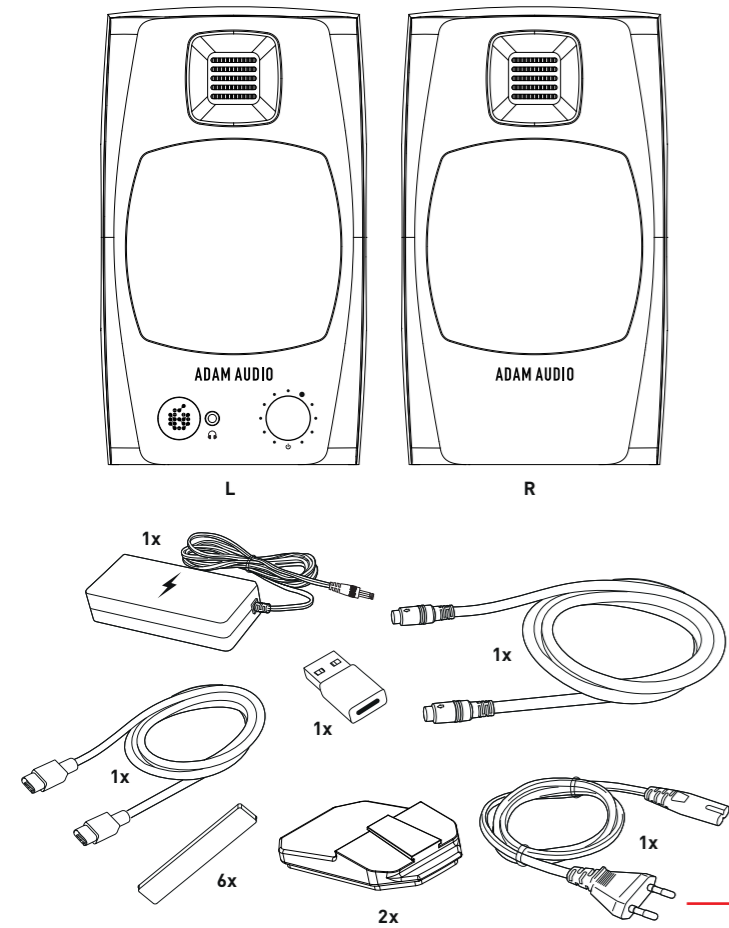
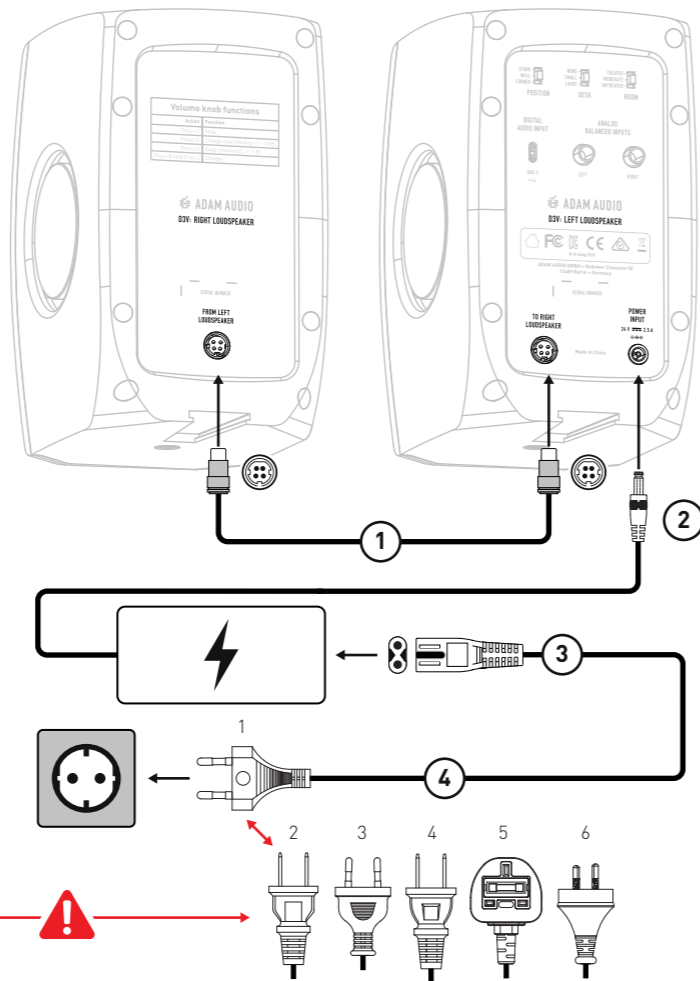


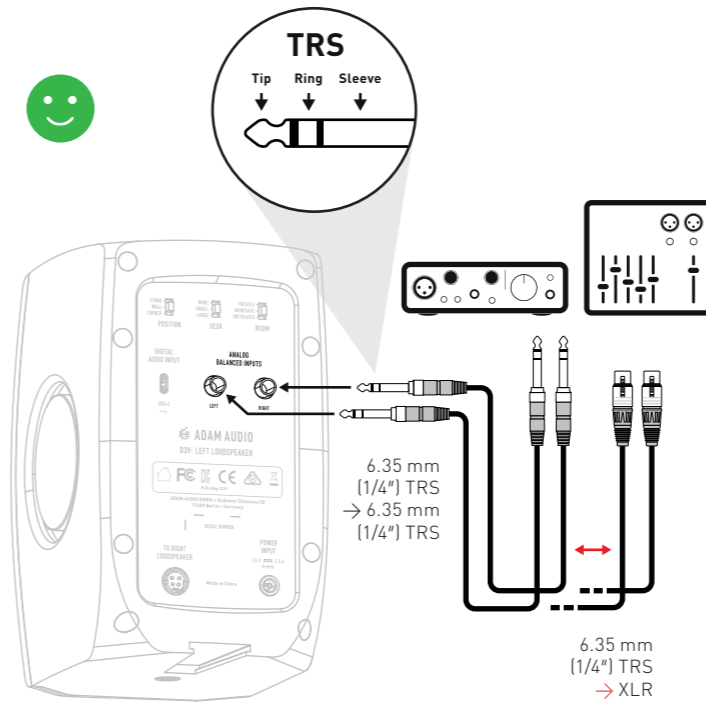
1) What's included



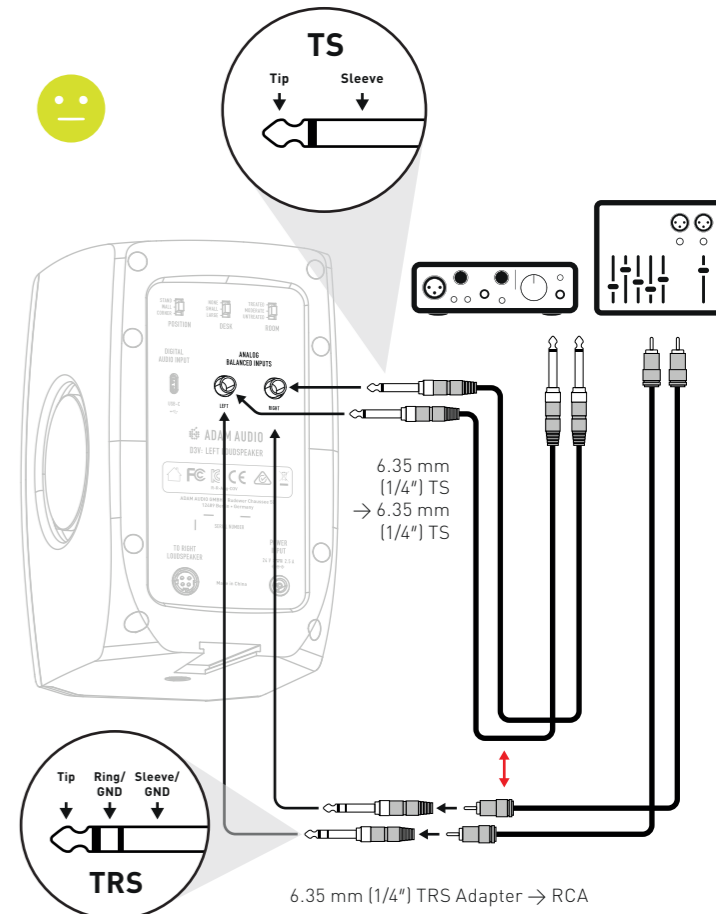
2) Power connection



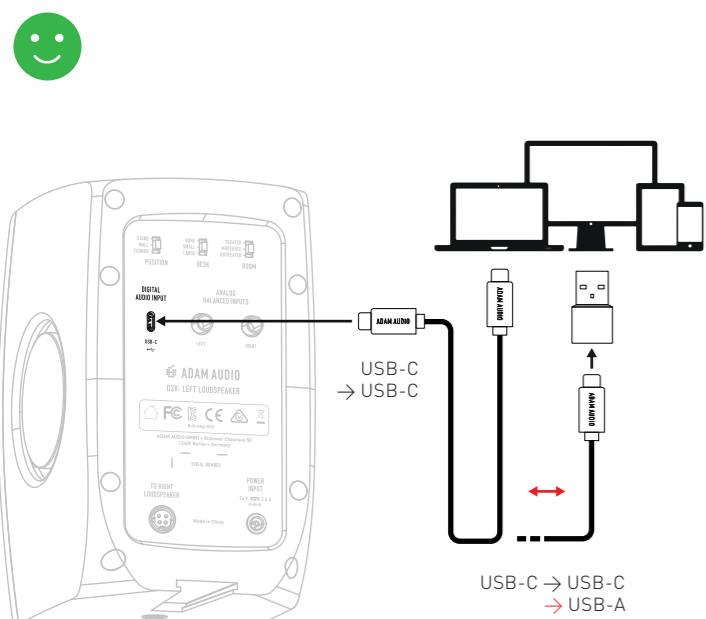
3) Balanced analog audio connection



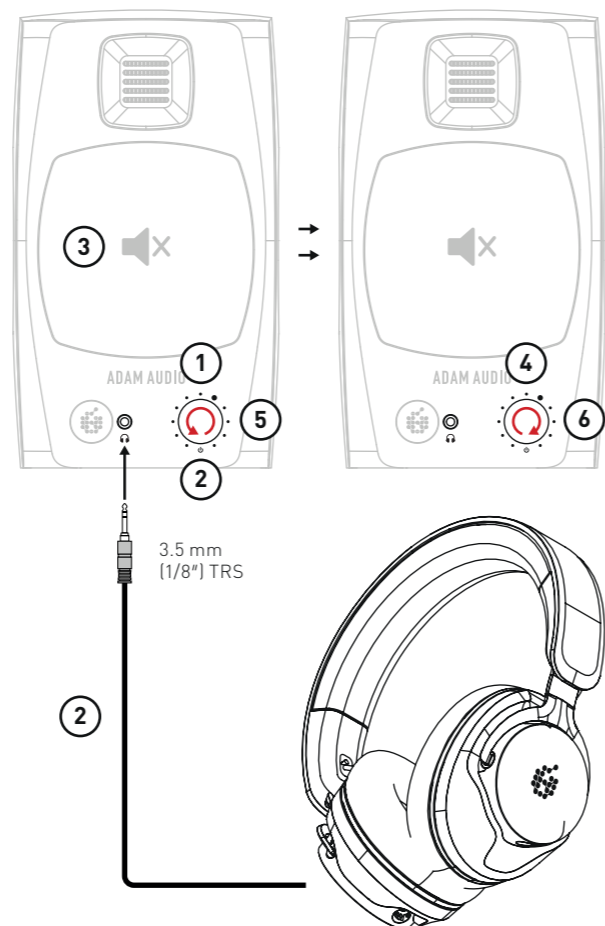
4) Unbalanced analog audio connections



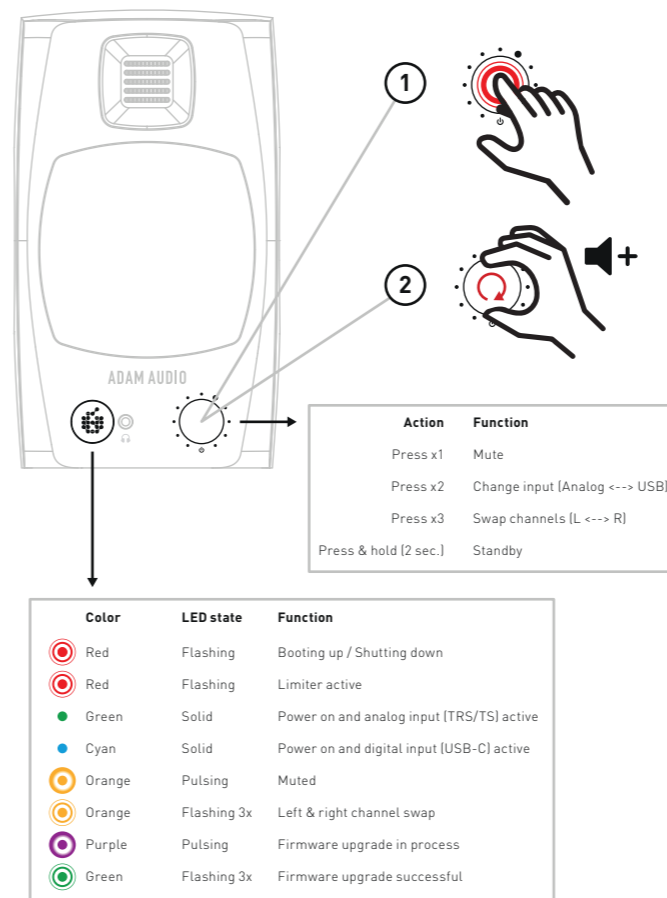
5) Balanced digital audio connection



6) Headphone connection

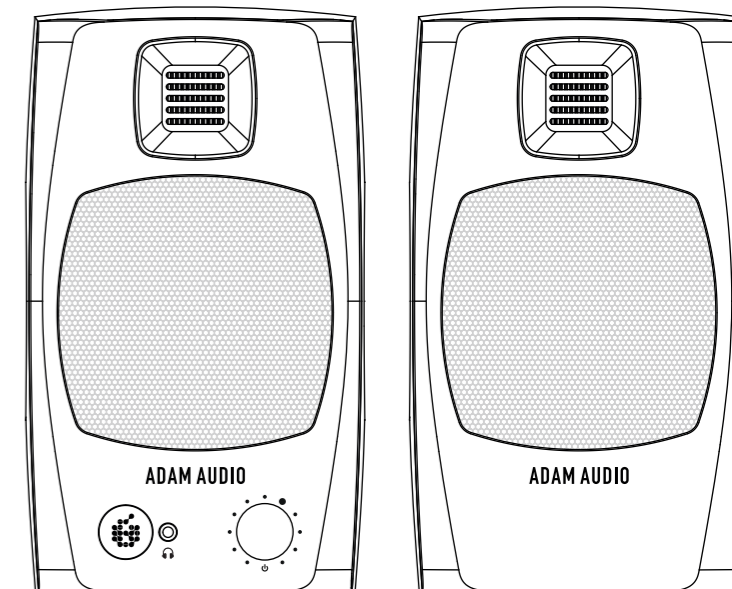


7) Use of rotary front knob & LED states



D3V

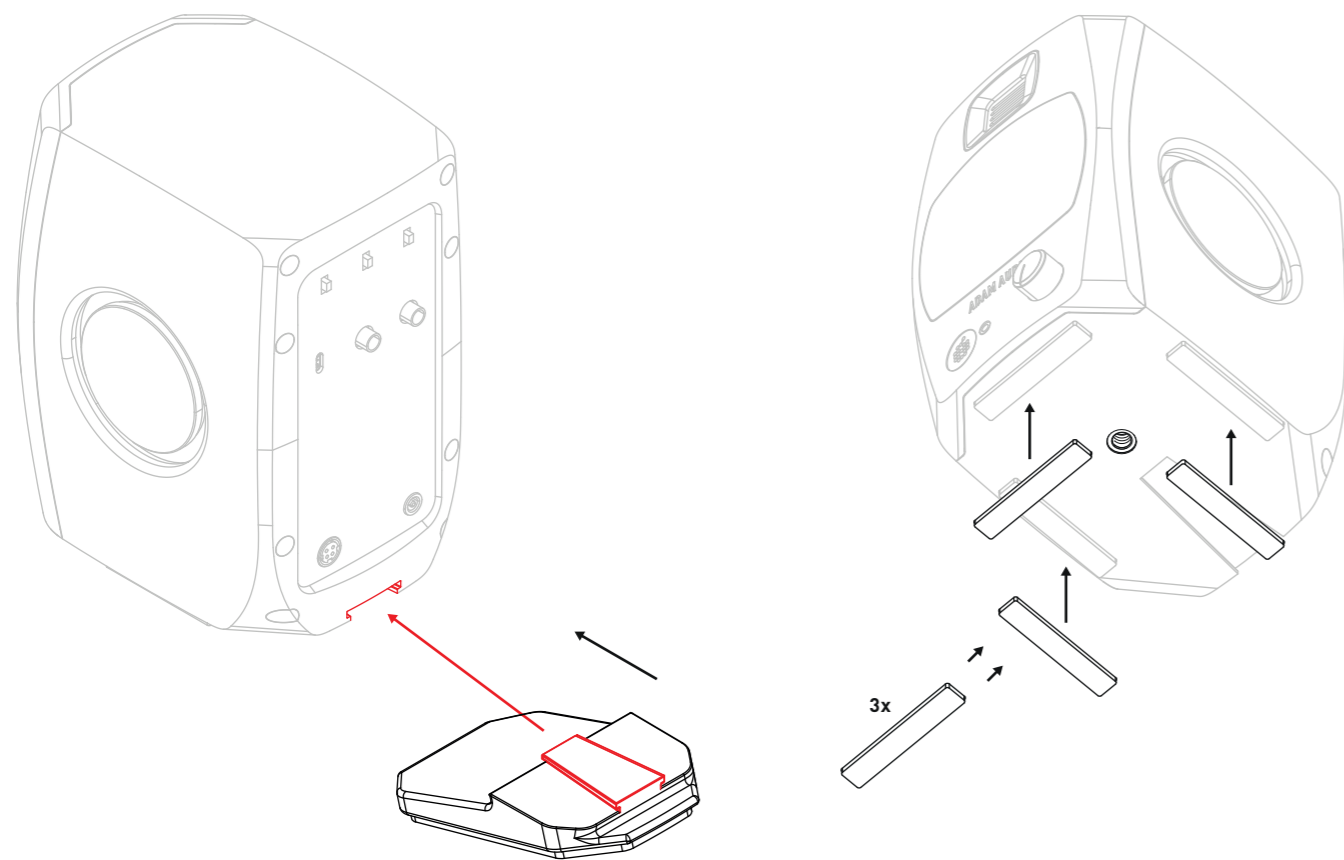
Desktop
Monitor System



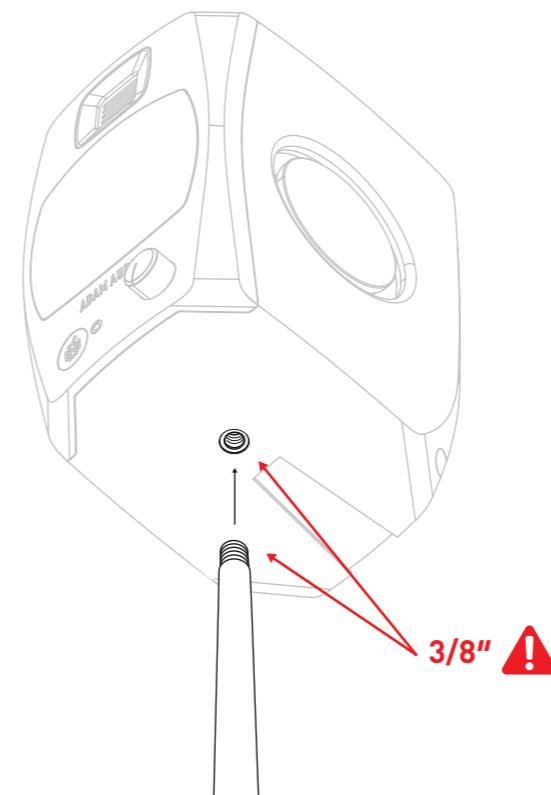
Quick Start Guide

ADAM AUDIO

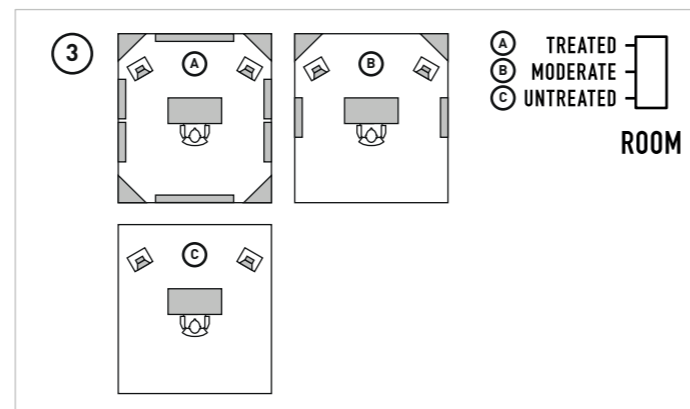
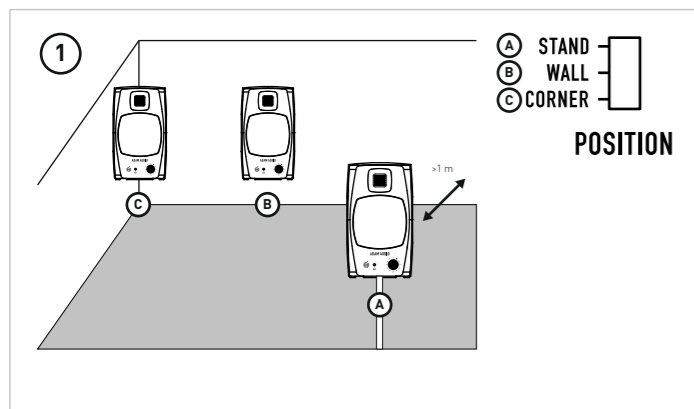
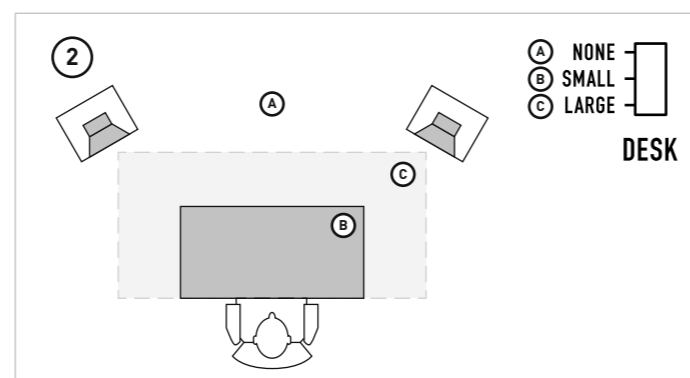
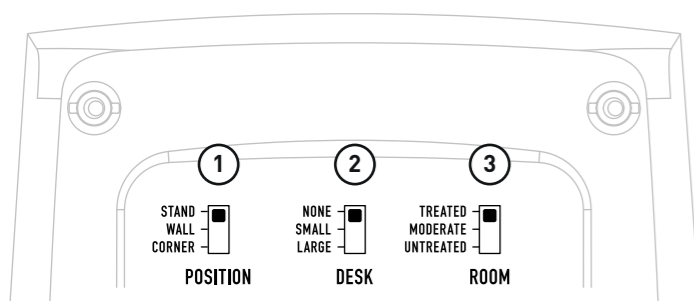
8) Desktop stand connection & stick-on pads



9) Microphone stand connection



10) EQ section



For the complete user manual, visit:
 Pour le manuel d'utilisation complet, visitez:
 Para consultar el manual de usuario completo, vaya a:
 Para consultar o manual de usuário completo, visite:
 Per consultare il manuale utente completo, visitate:
 Ein vollständiges Benutzerhandbuch finden Sie auf:
 詳しいマニュアルは、下記にて:
 查看完整的用户手册, 请访问:
 查看完整的用户手册, 请访问:
 설명서 전부를 보시려면 다음 웹사이트를 방문하십시오 :

www.adam-audio.com/d3v/manual

